

# Results of the Danish Bicycle Fund

Mia Stampe Lagergaard  
Henrik Nejsø Jensen



**What do you get for € 133 M?**

Eksamples



The Danish Cycling Fund



Distribution of projects

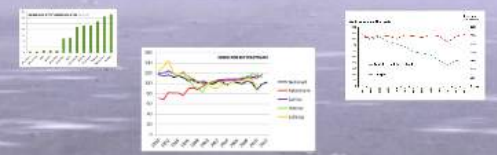


Lessons learned



Thank you

Facts and figures



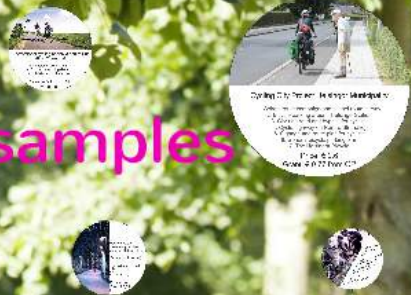
Economy



Want to know more?



Eksamples



What do you get for € 133 M?

Results of the Danish Bicycle Fund

Mia Stampe Lagergaard  
Henri Nejt Jensen



The Danish Cycling Fund



Distribution of projects

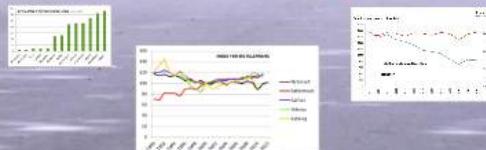


Lessons learned



Thank you

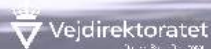
Facts and figures



Economy



Want to know more?



**What do you get  
for € 133 M?**

# Results of the Danish Bicycle Fund

Mia Stampe Lagergaard  
Henrik Nejst Jensen



# Economy

## Is € 133 M a lot of money?

• Comparison (rough figures !)

For that amount you could get:

330 km	Bicycle superhighways
120 km	New bicycle paths in cities
10 km	New motorway (4 lanes in rural area)
6,5 km	New train rails
0,7 km	Metro city line

## Who finances bicycle infrastructure in Denmark

• State (present situation) - annual investment  
- The Cycling Fund - € 22 M  
- Supercycle Highway Fund - € 25 M  
- Other - € 1-2 M

• Municipalities - annual investment  
- Total investment of bicycle infrastructure uncertain, but at least - € 70 M  
- Qualified guess - € 90-110 M

# Is € 133 M a lot of money?

- **Comparison (rough figures !)**

## For that amount you could get:

330 km	Bicycle superhighways
120 km	New bicycle paths in cities
10 km	New motorway (4 lanes in rural area)
6,5 km	New train rails
0,7 km	Metro city line

# Who finances bicycle infrastructure in Denmark

- **State (present situation) - annual investment**
  - **The Cycling Fund - € 22 M**
  - **Supercycle Highway Fund - € 25 M**
  - **Other - € 1-2 M**
- **Municipalities - annual investment**
  - **Total investment of bicycle infrastructure uncertain, but at least - € 70 M**
  - **Qualified guess - € 90 -110 M**

# The Danish Cycling Fund

## Facts

- Established as part of the major transport agreement Green Transport Policy
- Runs from 2009 to 2014
- Holds € 133 (DKK 1 billion)

## Outcome

In the period 2009-2012 the Cycling Fund has:

- Subsidized 221 projects in municipalities, NGO's and organizations by awarding € 64 million (DKK 481 million in grants)
- Financed 35 projects on national roads € 28 (DKK 210 million)

## Goals

- To promote projects that can improve conditions for cyclists, thereby making it more attractive, widespread and safe to use the bicycle as a form of transport
- 1/3 is used to improve conditions for cyclists on national roads
- 2/3 are used to subsidize projects by local municipalities, businesses and organisations wishing to make a contribution to cycling.



# Facts

- **Established as part of the major transport agreement Green Transport Policy**
- **Runs from 2009 to 2014**
- **Holds € 133 (DKK 1 billion)**

# Goals

- **To promote projects that can improve conditions for cyclists, thereby making it more attractive, widespread and safe to use the bicycle as a form of transport**
- **1/3 is used to improve conditions for cyclists on national roads**
- **2/3 are used to subsidise projects by local municipalities, businesses and organisations wishing to make a contribution to cycling.**

# Outcome

**In the period 2009-2012 the Cycling Fund has:**

- **Subsidized 221 projects in municipalities, NGO's and organizations by awarding € 64 million (DKK 481 million in grants)**
- **Financed 35 projects on national roads € 28 (DKK 210 million)**

# Distribution of projects

## Financial distribution (mio. DKK)

	2009	2010	2011	2012	Total	National
Cycling cities	62,4	48,1	23,7	28,3	158,5	
Cycle commuting	42,7	30,2	33,9	37,7	144,5	50
Cycling to school and leisure	28,3	29,5	26,1	17,8	101,7	53
Recreational cycling and cycling tourism	3,3	7,2	8,4	10,4	29,3	107
Development and demonstration projects	8,8	5,1	4,1	4,2	22,0	
Campaigns	5,5	2,7	5	1,3	14,5	
Cycling tourism on small islands	0,8	5,0	-4,8	0,0	9,8	
<b>Total</b>	<b>151,8</b>	<b>125,8</b>	<b>106</b>	<b>97,7</b>	<b>481,3</b>	<b>210</b>

## Thematic distribution

	2009	2010	2011	2012	Total	National
Cycling cities	15	9	4	3	28	6
Cycle commuting	20	8	9	15	52	16
Cycling to school and leisure	22	10	23	19	75	16
Recreational cycling and cycling tourism	6	4	6	4	20	11
Development and demonstration projects	8	5	3	2	18	
Campaigns	0	4	3	0	7	
Cycling tourism on small islands	77	65	52	47	241	30
<b>Total</b>						



# Thematic distribution

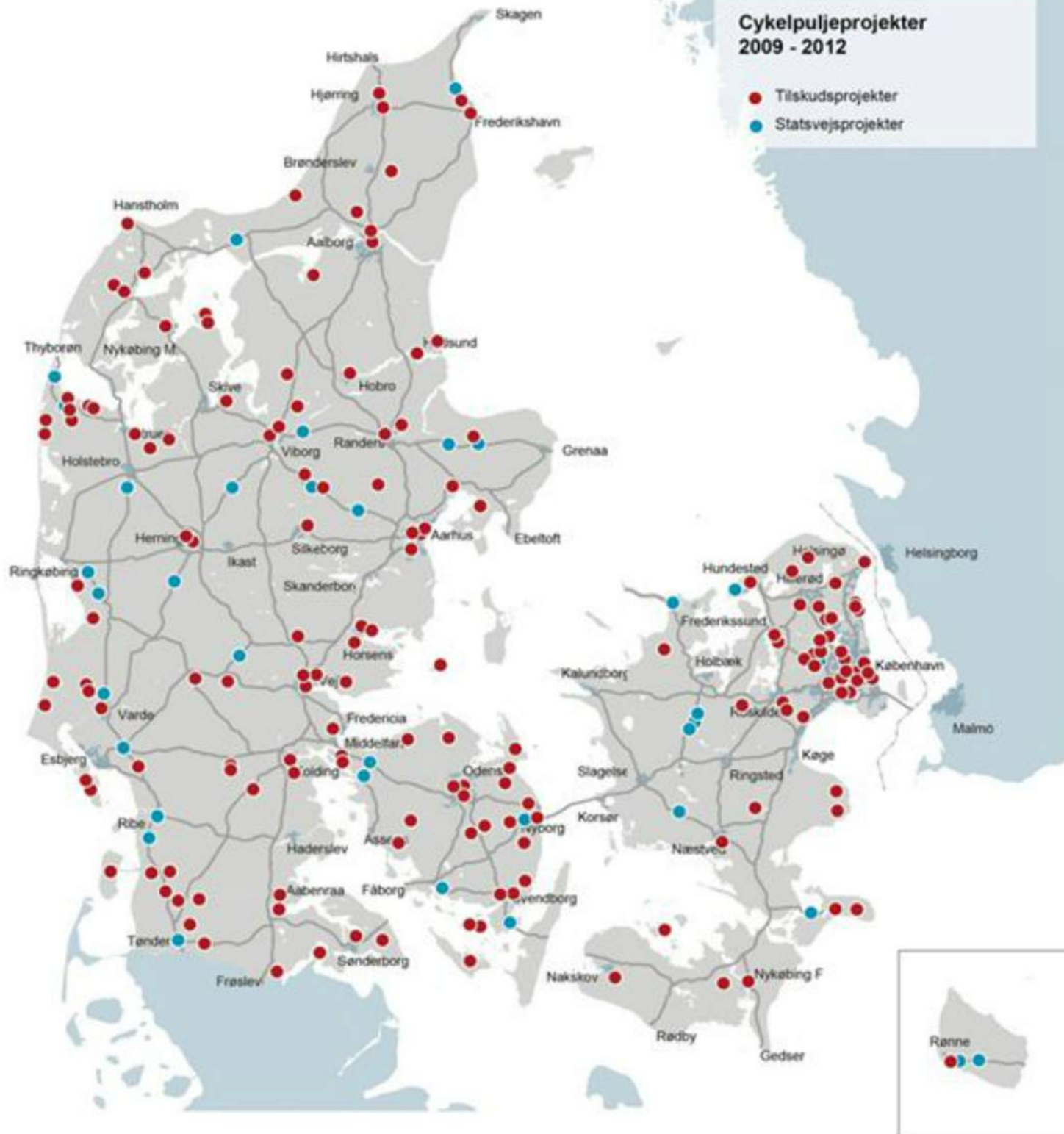
	2009	2010	2011	2012	Total	National
Cycling cities	13	9	4	3	<b>29</b>	
Cycle commuting	20	8	9	15	<b>52</b>	6
Cycling to school and leisure	22	10	23	18	<b>73</b>	16
Recreational cycling and cycling tourism	5	4	6	5	<b>20</b>	11
Development and demonstration projects	12	5	4	4	<b>25</b>	
Campaigns	5	5	3	2	<b>15</b>	
Cycling tourism on small islands	0	4	3	0	<b>7</b>	
<b>Total</b>	<b>77</b>	<b>45</b>	<b>52</b>	<b>47</b>	<b>221</b>	<b>33</b>

# Financial distribution (mio. DKK)

	2009	2010	2011	2012	Total	National
Cycling cities	62,4	46,1	23,7	26,3	158,5	
Cycle commuting	42,7	30,2	33,9	37,7	144,5	50
Cycling to school and leisure	28,3	29,5	26,1	17,8	101,7	53
Recreational cycling and cycling tourism	3,3	7,2	8,4	10,4	29,3	107
Development and demonstration projects	9,6	5,1	4,1	4,2	23,0	
Campaigns	5,5	2,7	5	1,3	14,5	
Cycling tourism on small islands	0,0	5,0	4,8	0,0	9,8	
<b>Total</b>	<b>151,8</b>	<b>125,8</b>	<b>106</b>	<b>97,7</b>	<b>481,3</b>	<b>210</b>

## Cykelpuljeprojekter 2009 - 2012

- Tilskudsprojekter
- Statsvejsprojekter





Recreational cycling on the island of Fur  
(Skive Municipality)

- Development of cycle map
- Asphalt on existing dirt track
- Establishment of rest stops

Grant: € 0,15 from CP  
=total cost



Cycling

1. Scho
2. E
- 3.
- 4.
- 5.

# Eksamples



Recreative cycle  
route along ancient  
Western Defence Line

(Several municipalities)

- Asphalt on existing dirt track
- Street lighting
- Safe crossing

Price € 2,0  
Grant: € 0,55  
from CP





## Recreational cycling on the island of Fur (Skive Municipality)

- Development of cycle map
- Asphalt on existing dirt track
- Establishment of rest stops

Grant: € 0,15 from CP  
=total cost



## Cycling City Project Helsingør Municipality

1. School route campaign and school route survey
2. Bicycle parking around Helsingør Station
3. City ring road and bypass for cyclists
4. Cycle highway on Nordre Strandvej
5. Signage and route plan for cyclists
6. General bicycle parking plan
7. The Helsingør Bicycle

Price: € 2,6

Grant: € 0,77 from CP

S



## Recreative cycle route along ancient Western Defence Line

(Several municipalities)

- Asphalt on existing dirt track
- Street lighting
- Safe crossing

Price € 2,0

Grant: € 0,55  
from CP

# Cycling-Happy school

(Odense Municipality)

- Cycling on the school curriculum
- Survey → action plan → activities
- Includes students (6+), teachers, parents, etc

Price: € 2,8, Grant: € 0,4 from CP





## Cyclistic.dk

(Danish Cycling Federation )

- Cycling portal developed
- Route planning tools
- Inspiration for holidays
- Enabled for mobile use
- Uses OpenStreetMap

Price: € 0,9,  
Grant: € 0,4 from CP

# Lessons learned

## Kick-starts cycling projects

- Many of the projects would otherwise not have been realized
- Strong representation of more communities, especially with vulnerable groups
- Provides the groundwork for meaningful, lasting or permanent to set up a cycling project
- Accelerates all projects in progress

## Most significant experiences

- Strategies, plans and visions provide a good starting point
- Things take time
- Communication is vital
- Important side benefits
  - increased focus on cycling
  - partnerships and network
  - more experience

# **Kick-starts cycling projects**

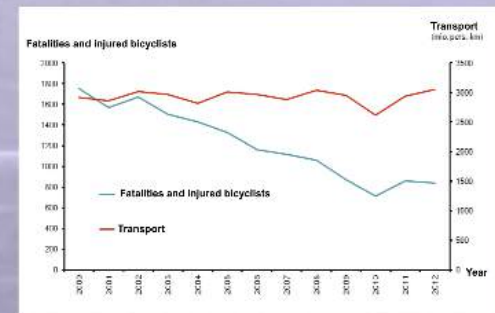
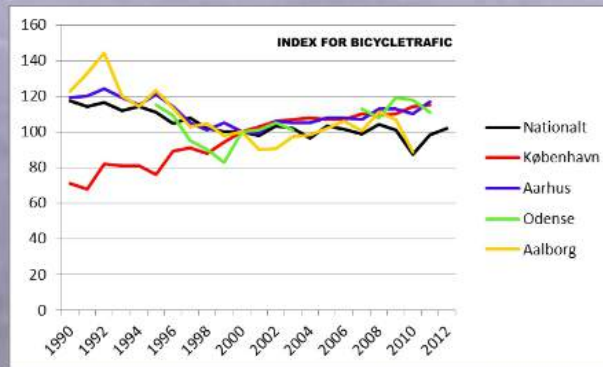
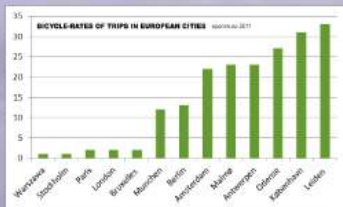
- **Many of the projects would otherwise not have been realized**
- **Enabled implementation of more comprehensive, innovative and interlocking projects**
- **Provides the push needed for municipality, business or organisation to set up a cycling project**
- **Accelerate of projects in pipeline**

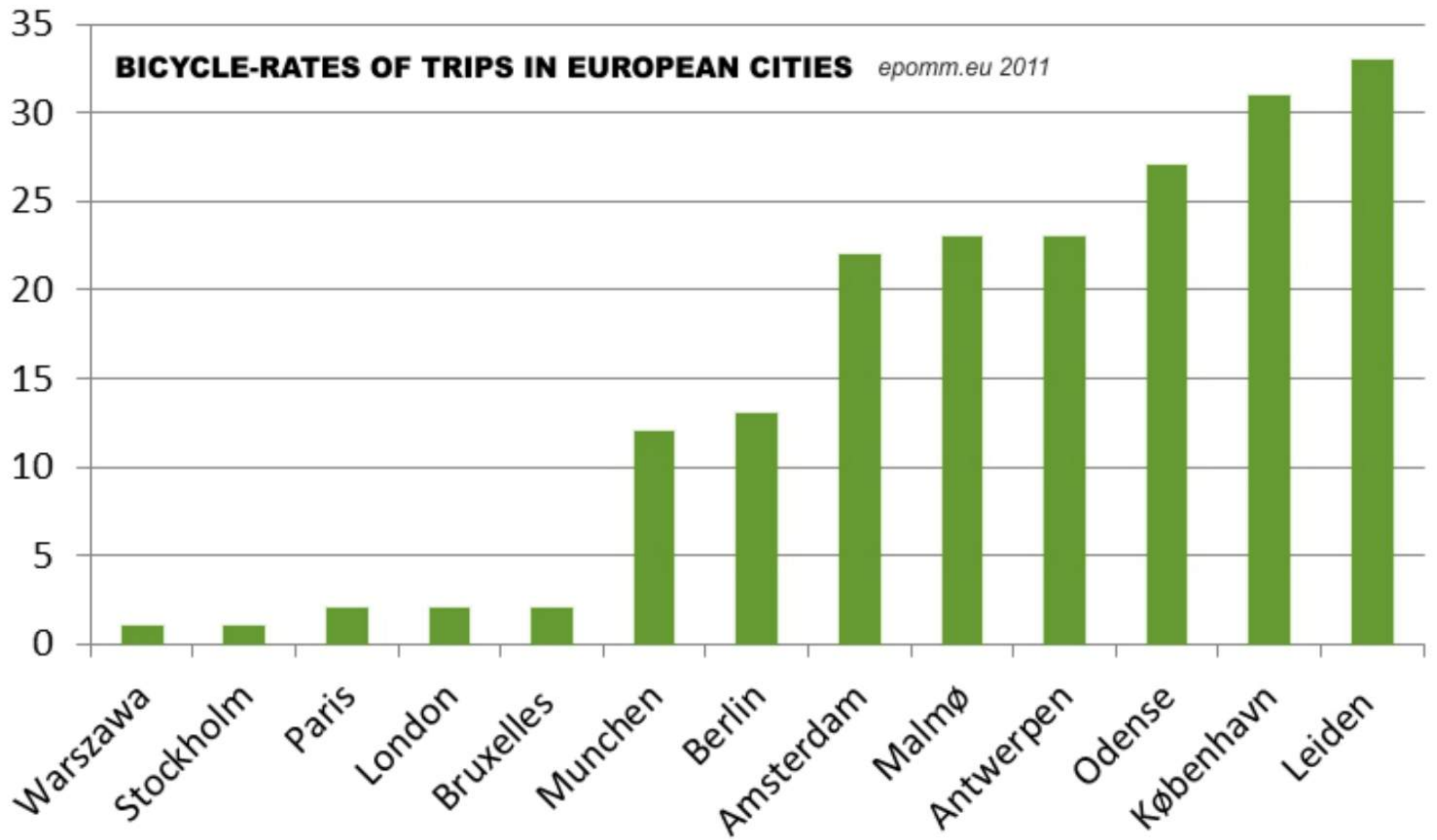
# **Most significant experiences**

- **Strategies, plans and visions provide a good starting point**
- **Things take time**
- **Communication is vital**
- **Important side benefits**
  - **increased focus on cycling**
  - **partnerships and network**
  - **more experience**

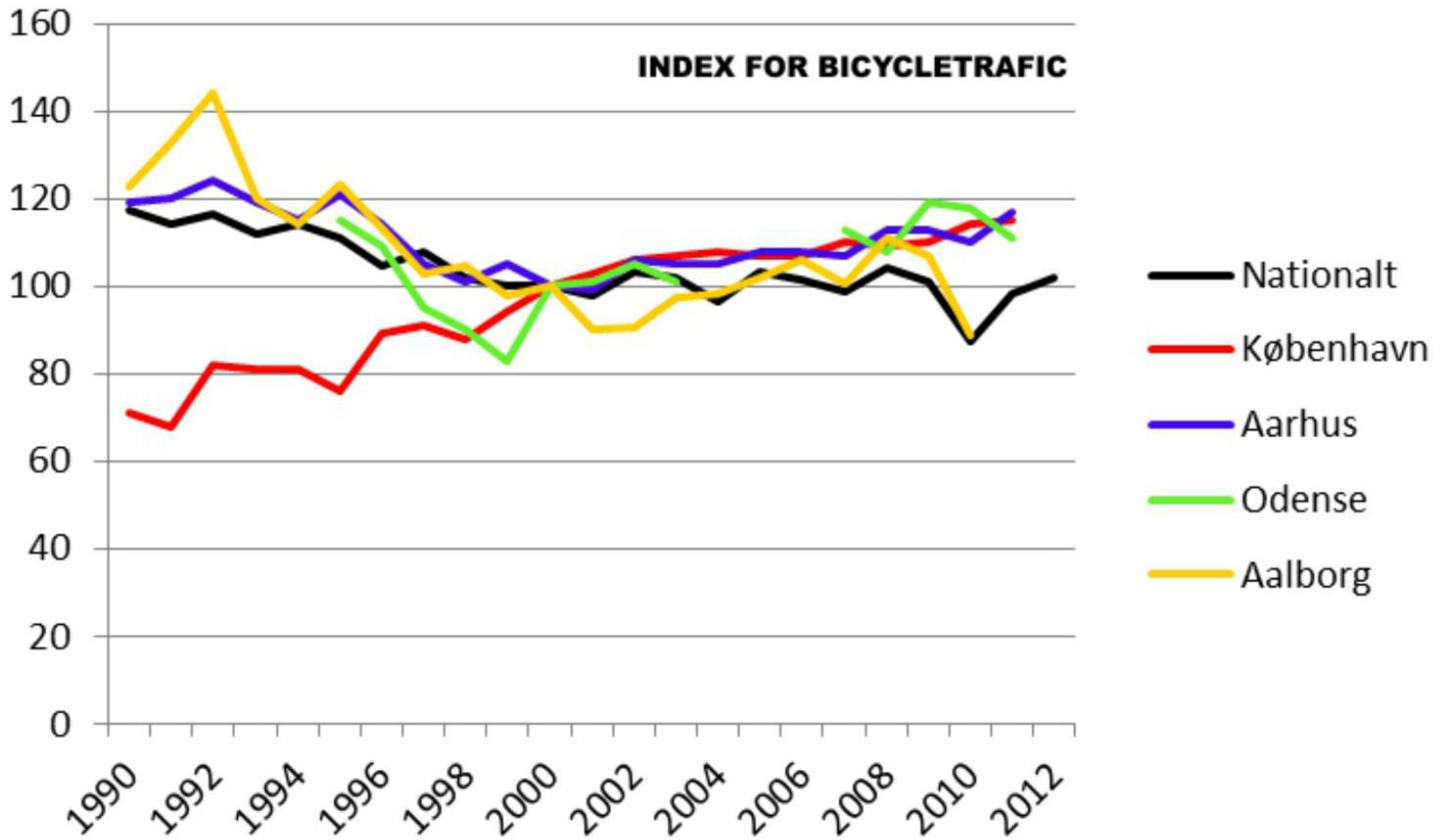


# Facts and figures





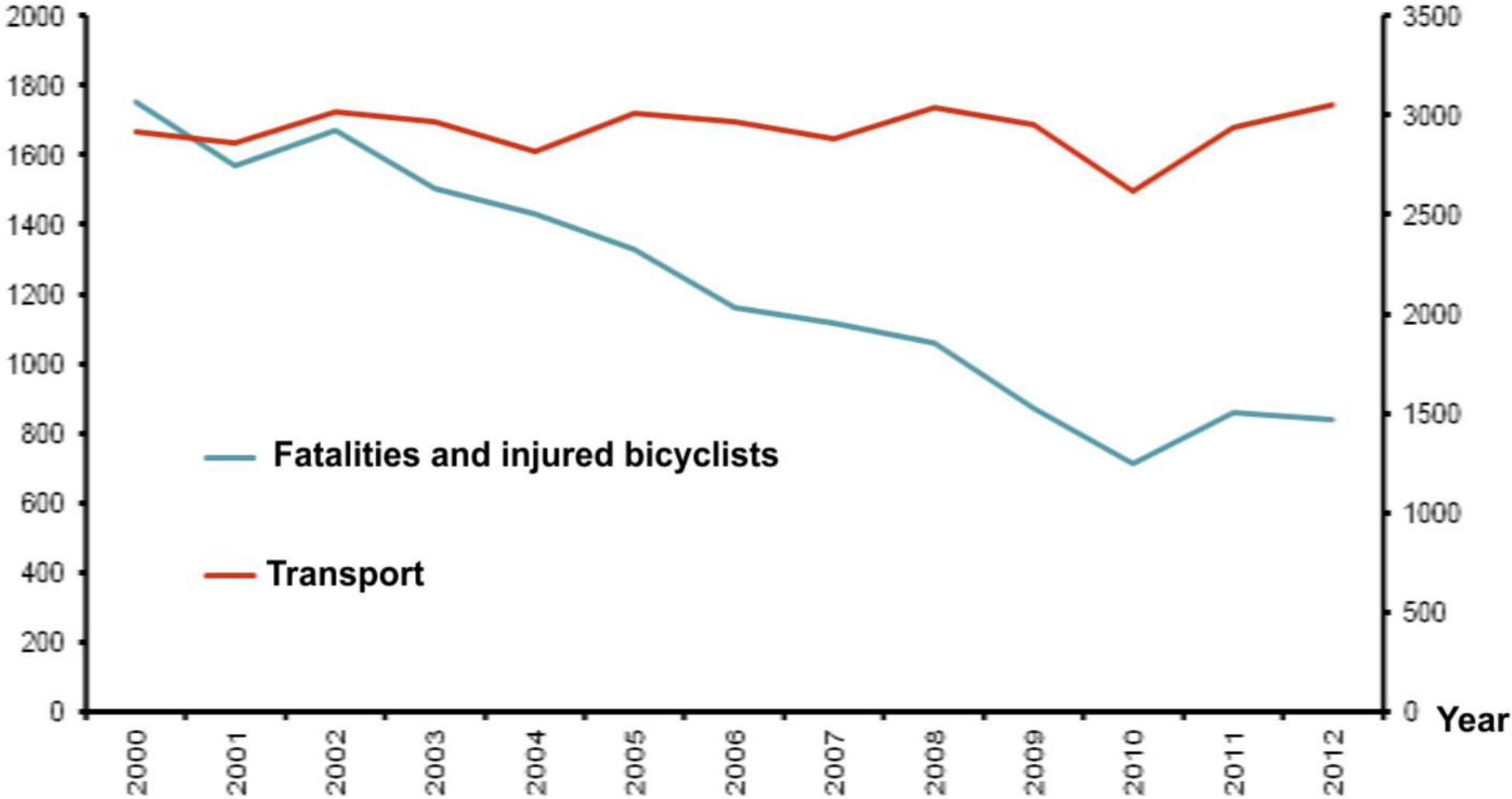
### INDEX FOR BICYCLETRAFIC



- Nationalt
- København
- Aarhus
- Odense
- Aalborg

**Transport**  
(mio. pers.-km)

### Fatalities and injured bicyclists



# Want to know more?

## Future

- New national bicycle strategy in pipeline
- New national funding yet uncertain - but the minister speaks favourably about the benefits of bicycle investments

## English

- [Cycling Fund 2012 - status report and selected examples](#)
- [The printed report can be obtained here.](#)

## Danish

- [Cykelpuljen 2009-2011 - status og udvalgte eksempler](#)
- [Cykelpuljen 2012 - status og udvalgte eksempler](#)

**These reports are accessible from the publication database of the Danish Road Directorate [\[link\]](#)**

# Future

- **New national bicycle strategy in pipeline**
- **New national funding yet uncertain - but the minister speaks favourably about the benefits of bicycle investments**

## **English**

- **Cycling Fund 2012 - status report and selected examples**
- **The printed report can be obtained here.**

## **Danish**

- **Cykelpuljen 2009-2011 – status og udvalgte eksempler**
- **Cykelpuljen 2012 – status og udvalgte eksempler**

**These reports are accessible from the  
publication database of the Danish  
Road Directorate [link]**

Thank you