

SHIFT HAPPENS!

CRITICAL MASS
at 20



Edited by
Chris Carlsson
LisaRuth Elliott
Adriana Camarena

SHIFT HAPPENS!
CRITICAL MASS
at
20



Full
Baltimore

WE'RE SORRY!

- We're sorry you are stuck in your car in a traffic jam. Gridlock is more and more common these days... it'll probably go on getting worse, unless we do something.
- We're sorry if we've contributed to your delay, but please recognize that we bicyclists are ignored, obstructed and physically threatened ALL THE TIME, EVERY DAY. This "Critical Mass" ride home is an organized coincidence that happens once a month, giving bicyclists of all persuasions the chance to see that we are not alone, and that we, too, have a right to the road.
- We're sorry that absurd and mean-spirited decisions about how we live are made behind the closed doors of the corporate and government elite, leading to a suicidal dependence on the automobile and the oil industry, a cancer epidemic and general ecological catastrophe. We know there are better alternatives, and our monthly ride demonstrates one of them.
- We're sorry that we all go on reproducing this silly and self-degrading way of life, instead of throwing it over and making a life worth living. Why should we do jobs which make our lives worse due to toxic waste or pollution? Why are our best intentions always corrupted by the need to "make a living"? These questions have complex and difficult answers, answers worth looking into. But for now...
- We're sorry you're not already out here on your bicycle riding with us! But we heartily invite you to join us next time. Remember, every day is a good bicycling day! Meet at the foot of Market Street on the last working Friday of the each month at 5:30 p.m.



"The Door is Always Open" by Dept. of Public Art, February 1993

CRITICAL MASS

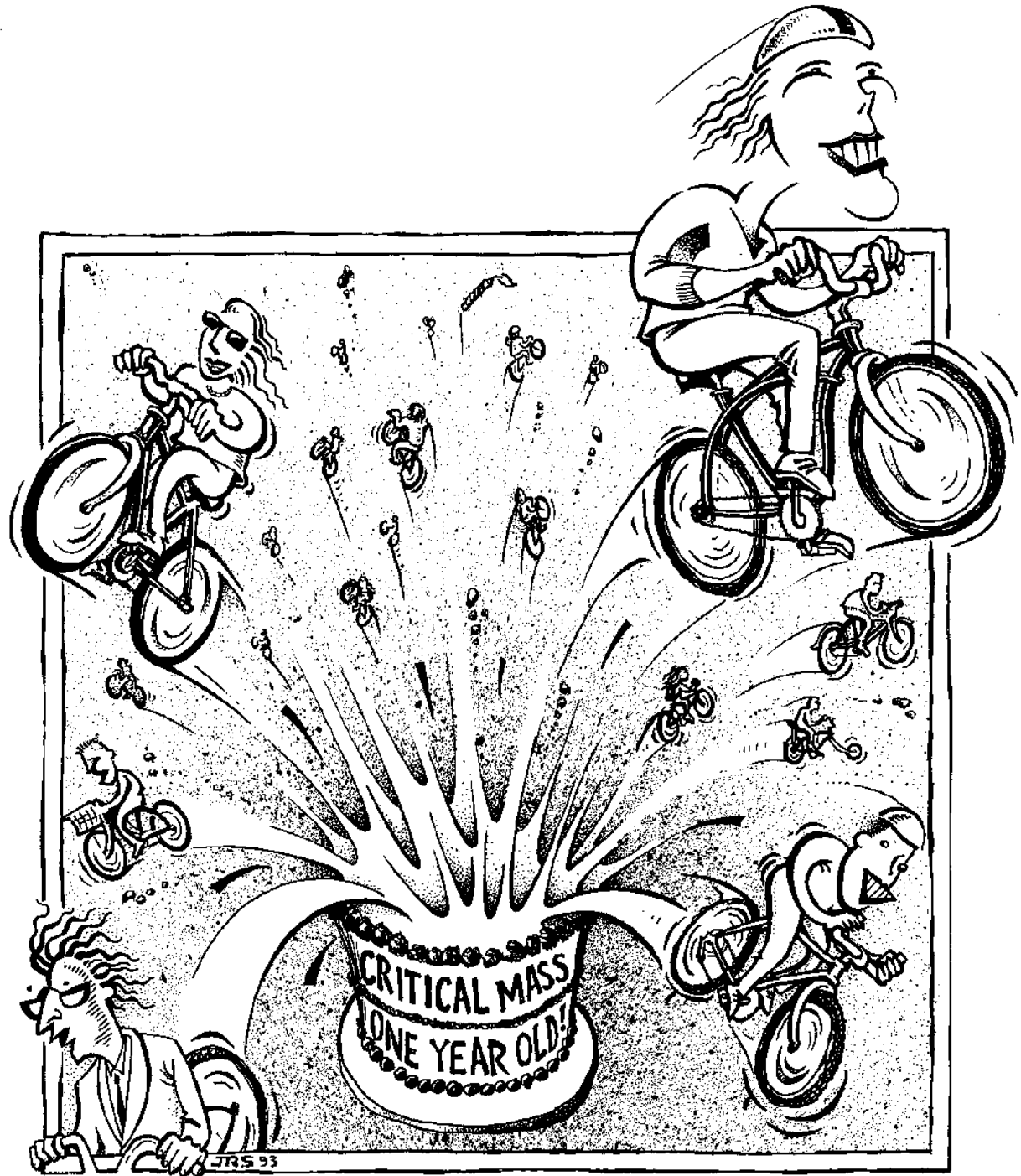


It is a terribly rash assumption that someone stuck in their car is necessarily a big supporter of the status quo. Consider instead the complexities of human choices and constraints and try to create openings in people's minds, rather than assuming that someone who hasn't adopted your choices about what to buy, how to get around, and lifestyles in general is your conscious enemy and deserves your moral condemnation, rage, or self-righteous taunting. It's not easy to proceed politically when we take seriously how difficult, deep and personal are the changes we seek. *But pleasure, passion, and patience can bring real progress. Remember, the Americans you scorn today must be your allies tomorrow if you are serious about changing life!*

**First Anniversary
celebration, Sept.**

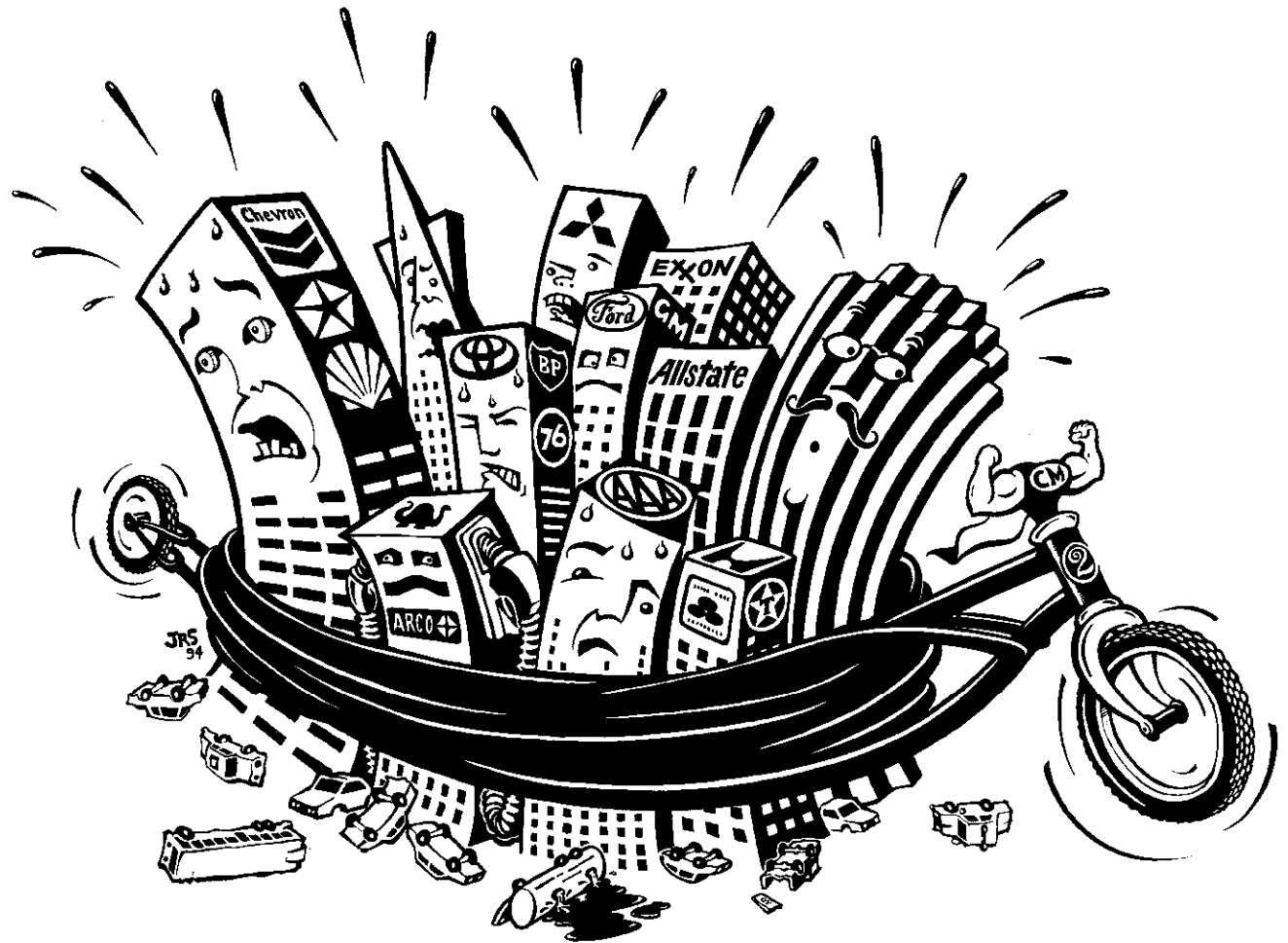
1993 art by Jim

Swanson



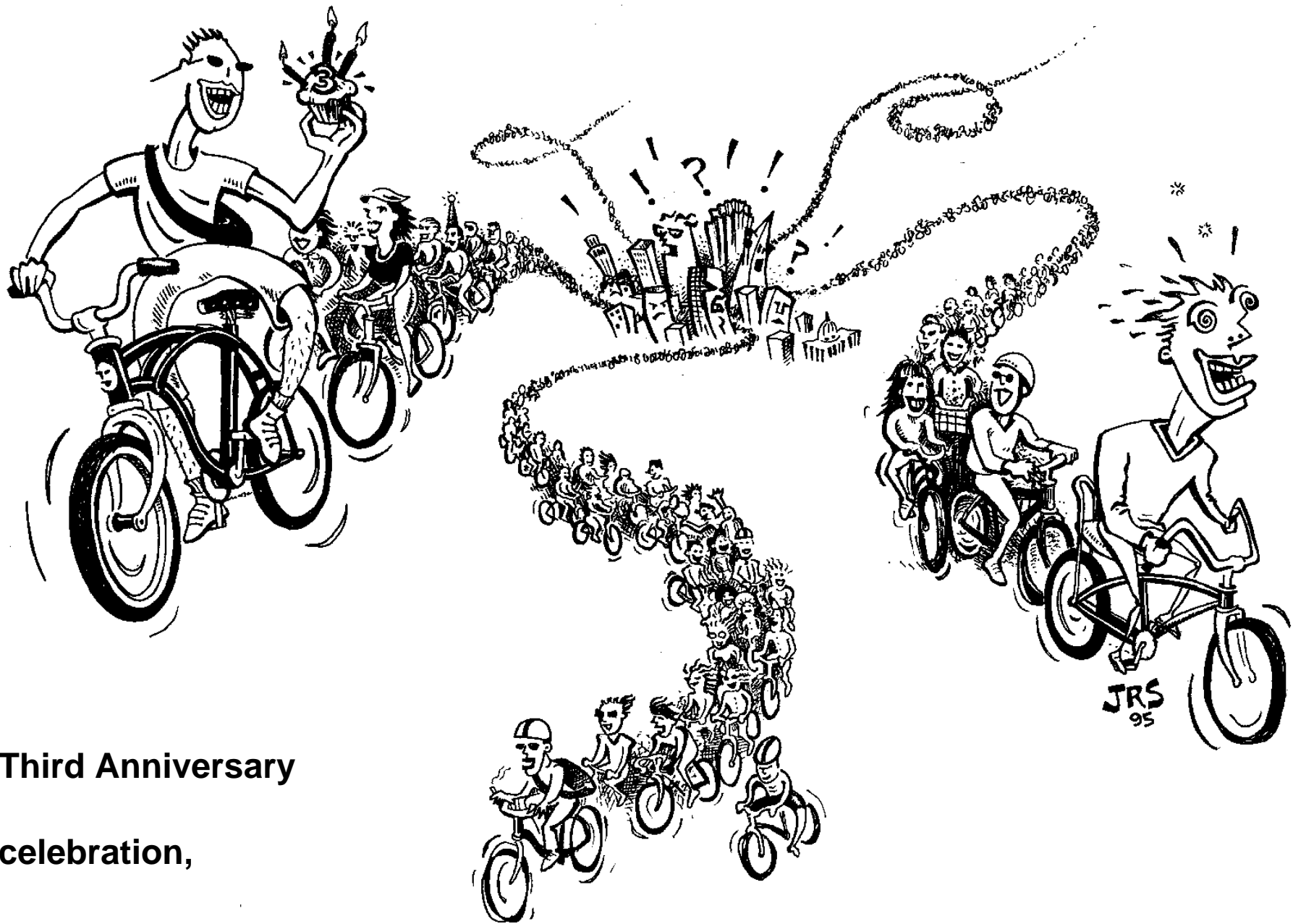
Second
Anniversary
celebration,
Sept. 1994

art by Jim Swanson



CRITICAL MASS

SAN FRANCISCO

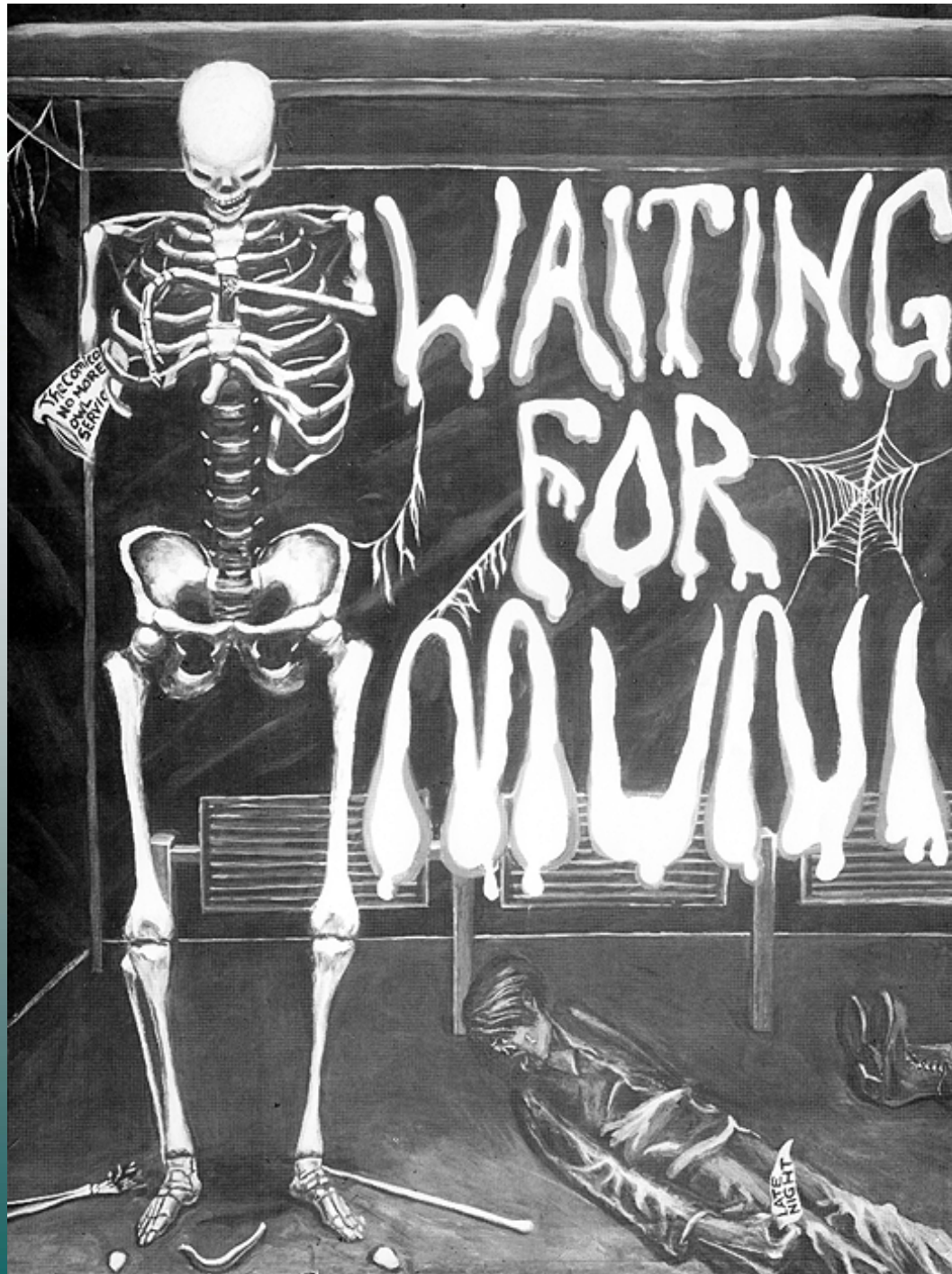


Third Anniversary

celebration,

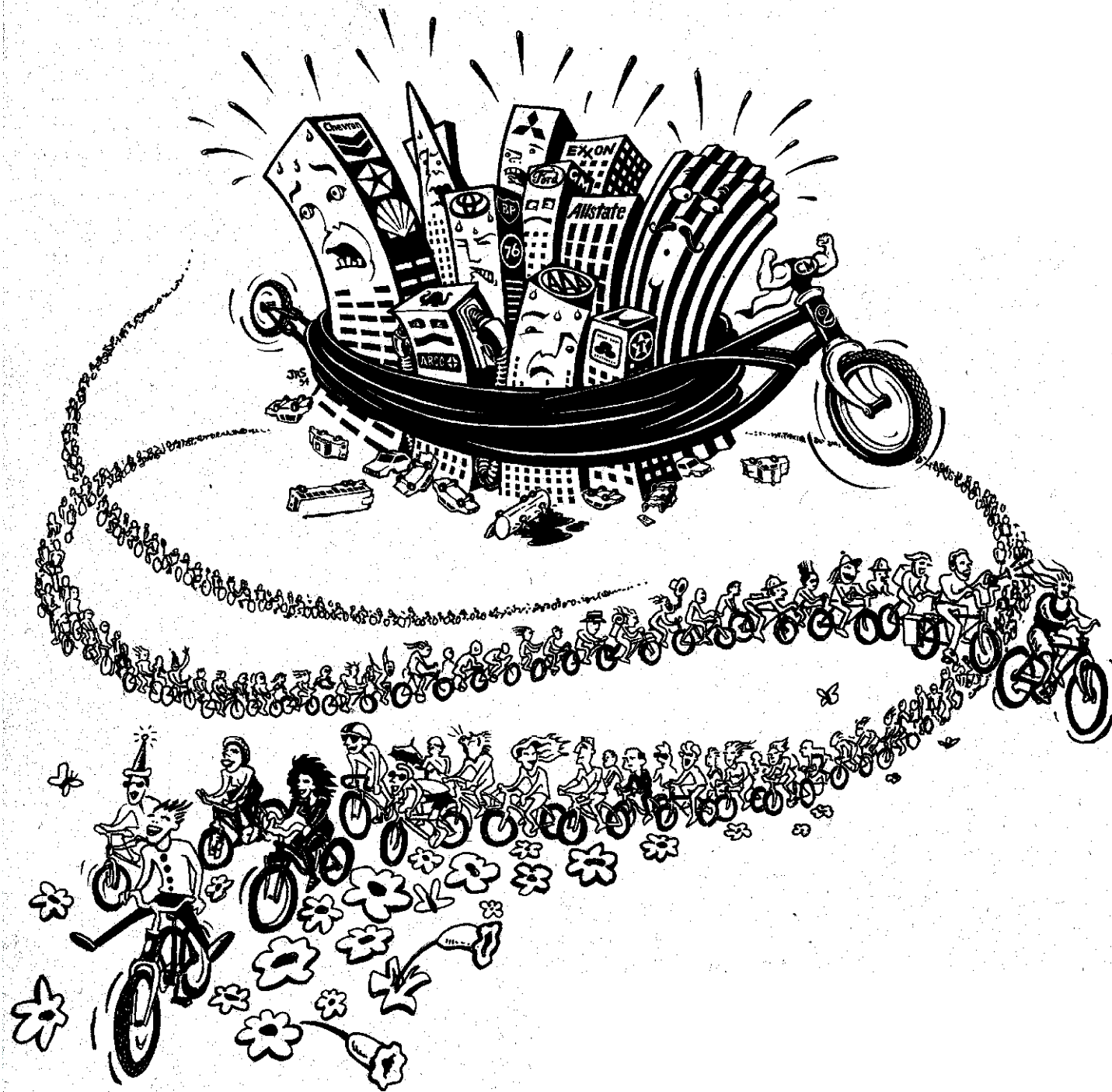
Sept. 1995

art by Jim Swenson



MUNI is San Francisco's public transit system...

c. 1996 by Beth Verdekal



Fifth Anniversary
celebration,
Sept. 1997

art by Jim Swanson

BICYCLIST ALERT!

Critical Mass Goes to City Hall! (uninvited!!)

The notoriously moribund and backward-thinking
Parking & Traffic Commission is going to discuss Critical Mass:



The Parking & Traffic Commission deliberating on how to stop bicyclists from using San Francisco's streets together . . .

Tuesday October 18 at 5:30 pm
City Hall, Room 282

HUNDREDS OF BICYCLISTS PACK THE MEETING!

and don't miss the Halloween Costume Critical Mass "Scary Streets Tour" on Friday Oct. 28



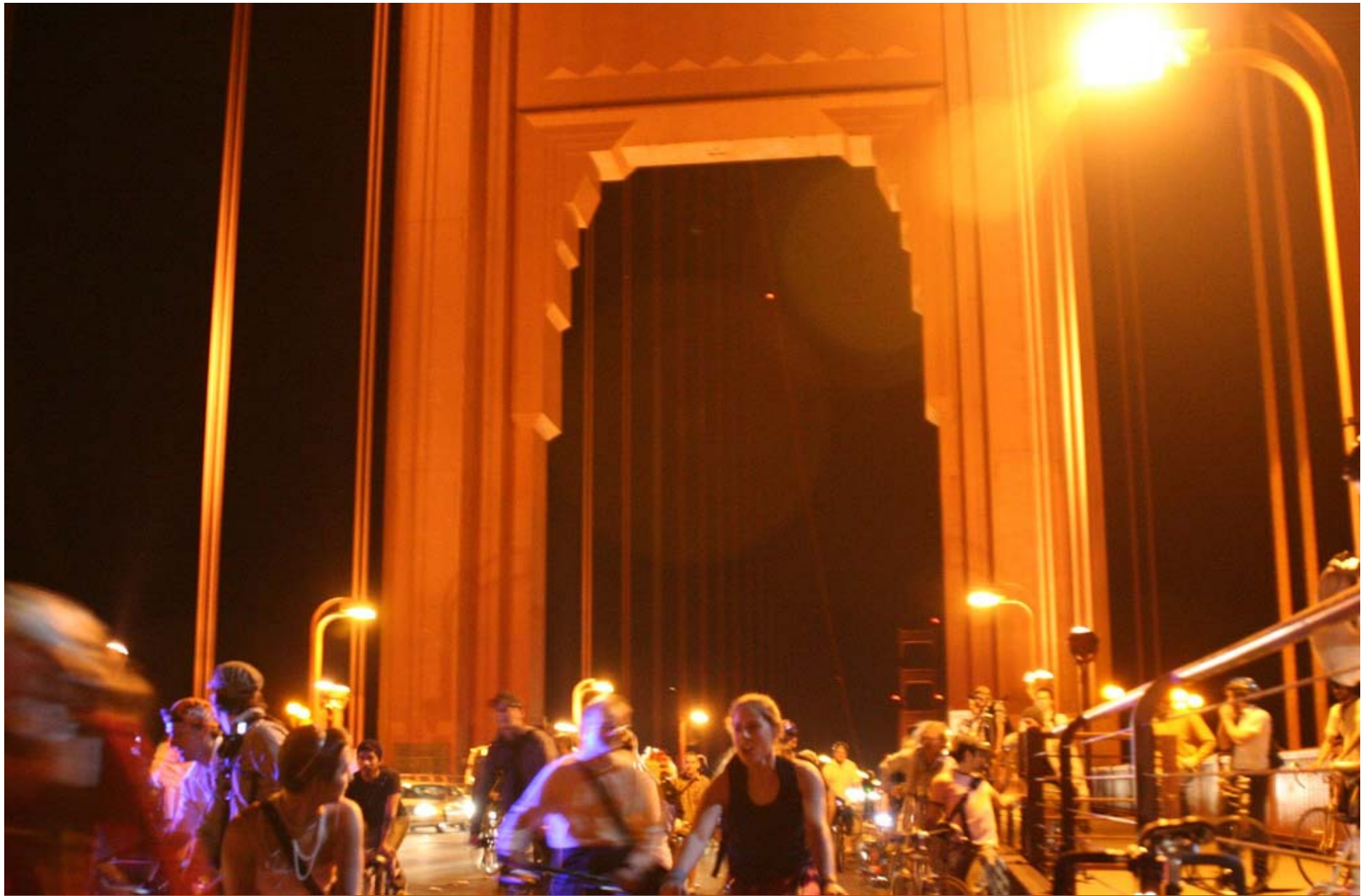
Critical Mass, San Francisco, August 1999

Critical Mass
10th anniversary
poster, 2002
by Mona Caron





Jay Broemmel's Golden Gate Bike
Cyclecide Bike Rodeo, Bike Kitchen, San
Francisco



**Halloween 2006 Critical Mass
takes Golden Gate Bridge**



**Critical Mass, Lombard St.,
San Francisco, July 2007**



**Critical Mass, Lombard St.,
San Francisco, July 2007**



Critical Mass, Van Ness Avenue,
San Francisco, July 2007



**Critical Mass, Lombard St.,
San Francisco, May 2012**





**Valet Bicycle Parking at baseball games
(SF Giants win World Series 2010)**



**Derailleurs (bike stunts and dance group)
perform at outdoor bike event 2010**



Critical Mass
20th anniversary
poster, 2012
by Mona Caron





Visitors from all over the world came to San Francisco for the Critical Mass 20th Anniversary



San Francisco Critical Mass 20th Anniversary



San Francisco Critical Mass 20th Anniversary



San Francisco Critical Mass 20th Anniversary



San Francisco Critical Mass 20th Anniversary



**Critical Mass – relationship to advocacy
and City power/politics?**

Critical Mass, New Orleans



**MAKE RESISTANCE
VISIBLE.**
Ride your bike.

**New Orleans
Critical Mass**

WHEN: Mini-rides leave every Friday at 5:30 PM
Biggle-rides are the last Friday of every Month
at 5:30 PM

WHERE: We meet in Jackson Square, in front of
St. Louis Cathedral

OUR GOALS:
* GET MORE PEOPLE ON BIKES!! * Make cycling fun!
* ONE LESS CAR ONE LESS CAR * Encourage
community-based organizing
(in the spirit of D.I.Y.)

www.nolacriticalmass.org

Critical Mass, Melbourne, Australia

Critical Mass
transforms
a dreary
commute into
a radiant
celebration
of a vibrant
urban life and
reclaiming of
public space.


Bikes are fun
and every
bicyclist is
one less car.


Critical Mass
is proof that
we are each
makers of
history and
shapers of
our own
social life.

Bike love
creates a
people powered
community that
enhances
urban experience,
the city is alive!

This poster is a gift from

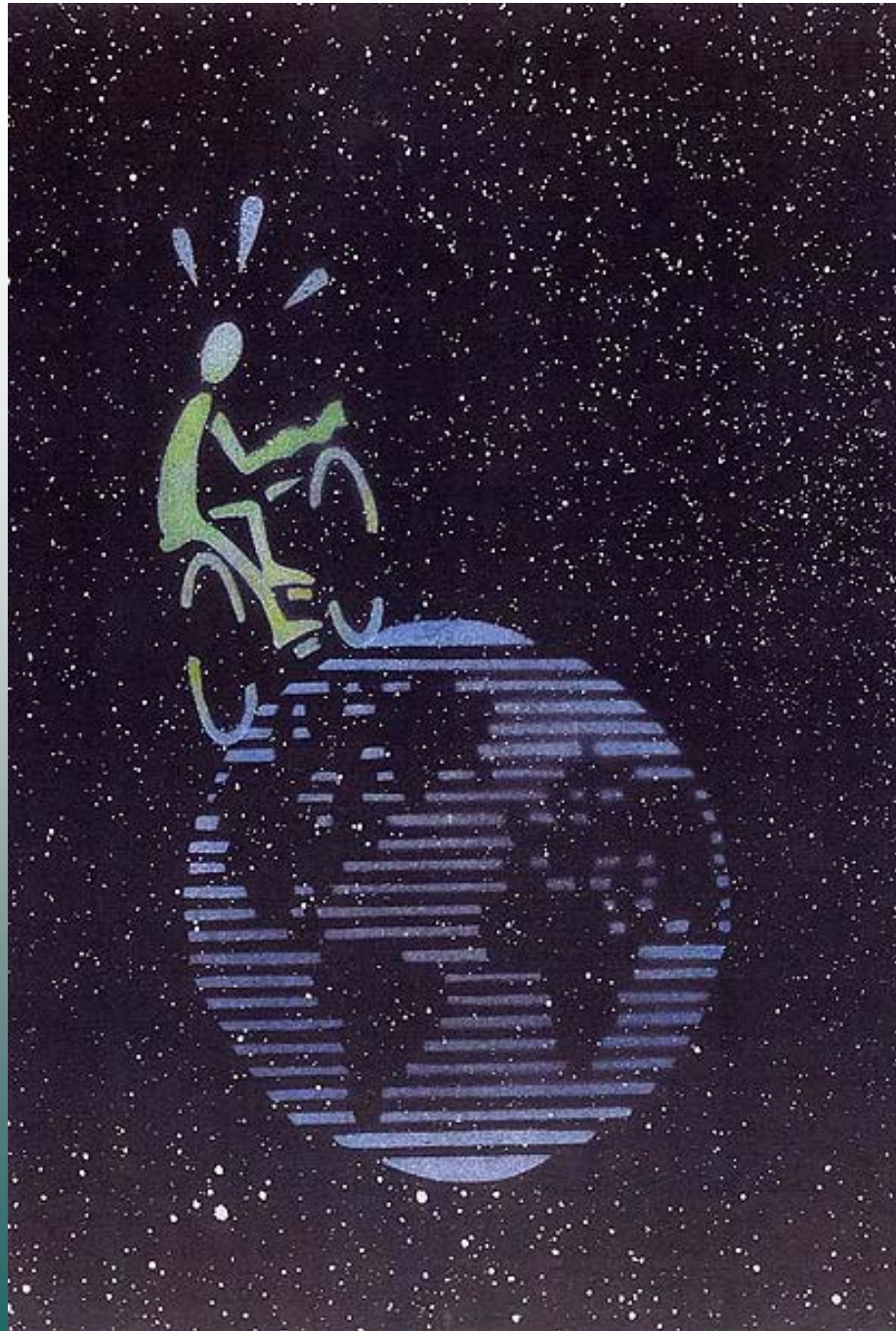

PM
5:30
LAST FRIDAY
EVERY MONTH

CRITICAL MASS  criticalmass.org.au





Critical Mass, Budapest, Hungary



**Critical
Mass,
Bologna,
Italy**

CRITICAL MASS

move your mind,
move your bike



25.5.'07/16Uhr Grosse Bergstr

Critical Mass, Hamburg, Germany

*Critical
mass*

Velos werden immer
mehr an den Rand
gedrängt, Velofahren
wird stets gefährlicher.

Mit einer kleinen Stadt-
rundfahrt wollen wir
zeigen, dass auch wir Teil
des Strassenverkehrs
sind. Verkleidete
FahrerInnen
willkommen!



31.März 2006
17.30 Uhr
Messeplatz

ERKEHR! WIR SIND VERKEHR! WIR SIND VERKEHR! WIR SIND VEI

Critical Mass, Germany



Critical Mass, Rome, Italy, May 30, 2008



Critical Mass, Rome, Italy, Clementina, May 31
2009



Critical Mass, Rome, Italy, to the beach, June 1,
08

venha para a festa!

Escolha o ponto de encontro mais próximo da sua casa e venha participar! Se preferir, utilize o metrô e vá direto até a Praça do Ciclista (estação Consolação). É de graça! É na rua!

Z0 Parque Água Branca
encontro na portaria da Francisco Matarazzo: 13h
saída: 14h

ZN Parque da Juventude
encontro na portaria 191: 13h
saída: 14h

ZL Parque do Piqueri
encontro na portaria da R. Tuiuti: 12h
saída: 13h30

ZS Parque do Ibirapuera
encontro na bifurcação da ciclovia (perto do portão 9): 13h
saída: 14h

ZO Parque Villa-Lobos
encontro na entrada principal do Parque, do lado interno: 13h
saída: 14h

Praça do Ciclista

Todos os grupos se encontrarão na **Praça do Ciclista** (altura do número 2400 da av. Paulista) por volta das **15h**. Às **16h**, uma grande **Bicicletada** pelas ruas da cidade.

massa crítica no aniversário de **25** São Paulo **25** jan

O ritmo é lento, **todos podem participar**. Deixe a pressa para os motoristas de carro que não têm prazer em andar pela cidade. Curta cada minuto do passeio: converse com os outros participantes, faça amigos e mostre aos motorizados que **a cidade é muito mais bonita para quem está do lado de fora**.

Critical Mass, Sao Paolo, Brazil

cycle * biciclette * bicicleta * magreia * fahrrad * bicicletta * camelo * fiets

sextas de bike

bicycle * велосипед * * bicycle * 自行車 * biciclette * bicicleta * fiets * fahrrad



**toda sexta-feira de dezembro
na Praça do Ciclista**

concentração Ludico-educativa: 18h30 / pedal Legal: 20h / av Paulista, 2440

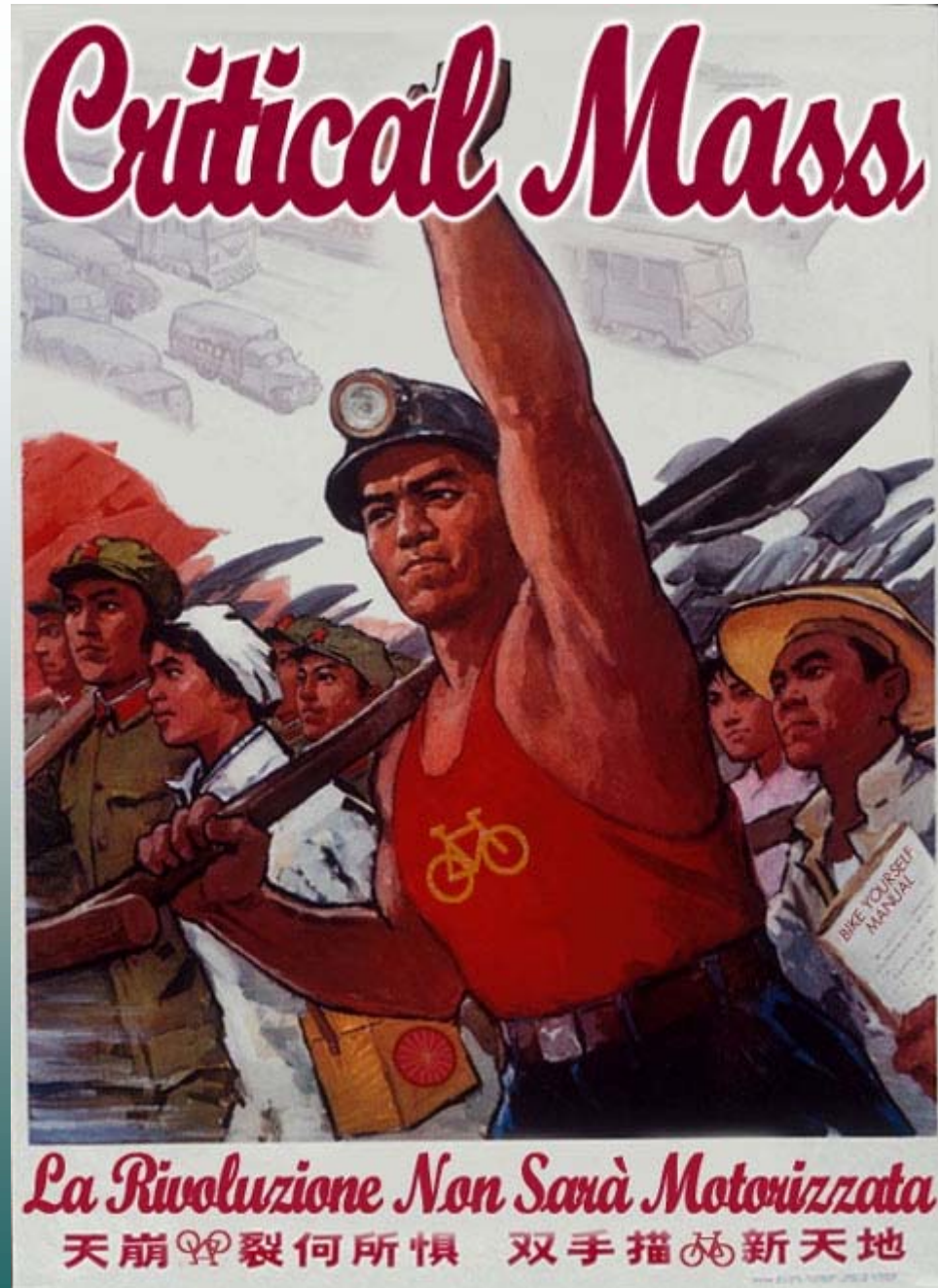
Critical Mass, Sao Paulo, Brazil

**Critical Mass,
Salt Lake City,
Utah**

**a monthly bicycle ride to celebrate cycling
and to assert cyclists' right to the road.**



Critical Mass,
Milan, Italy



**Critical Mass,
Rome, Italy**



**Masa Crítica os desea un
año lleno de buenos
humos**

**FELIZ
2003**

**NOS VEMOS EL PRIMER VIERNES DEL AÑO
A LAS 19:30 EN LA pza DE LA VIRGEN**

Critical Mass, Valencia, Spain

Canada



PIERO E' INNAMORATO DA TAZZI DELLA CICLOFFICINA!!

GENOVA
SS 2001
NON E' FINITA
10x
100
ANNI DI
CARCERE
www.10x100.it

DECIMA!

CRITICAL MASS

INTERPLANETARIA

I LOVE GNETO

FRAGIL



31 MAGGIO ore 18.10' P.ZA VITTORIO
1 GIUGNO ore 16.10' AUDITORIUM
2 GIUGNO ore 12.10' PISA MUSE

CICLOFFICINA
POPOLARE



Ciemmona 2013, Rome



Rome rides to the beach, Ciemmona, 1 June 2013